

**Specification**

**For**

**LCD Module**

**LH12864B-5**

## ■极限参数 ABSOLUTE MAXIMUM

Item	Symbol	Standard value	Unit
Power Supply Voltage	Vdd	-0.3 ~ +7.0	V
Power supply for LCD Drive	Vlcd	Vdd-19.0 ~ Vdd+0.3	V
Input Voltage	Vin	-0.3 ~ Vdd+0.3	V
Operating Temperature	Top	-20 ~ +70	°C
Storage Temperature	Tstg	-30 ~ +80	°C

## ■机械参数 MECHANICAL PARAMETERS

Item	Description	Unit
PCB Dimension	78.0 x 70.0 x 1.6	mm
LCD Dimension	56.5 x 42.5 x 2.6	mm
View Dimension	70.6 x 38.6	mm
Outline Dimension	78 x 70.0 x 8.0/13.5*	mm

## ■接口定义 PIN ASSIGNMENT

Pin NO.	Symbol	Level	Function
1	CS1	H/L	Select chip
2	CS2	H/L	Select chip
3	VSS	0V	Power Ground
4	VDD	+5V	Power supply
5	VO	-15V	Negative voltage(-15V)to LCD
6	RS	H/L	H: Display Data, L:Display Instruction
7	R/W	H/L	H: Read Signal, L: Write Signal
8	E	H/L	Enable Signal
9-16	DB0—DB7	H/L	Data bus
17	A	黄绿: 5V (白光: 3.2V)	LED Supply
18	K	0V	LED Ground

## ■电气参数 ELECTRICAL CHARACTERISTICS

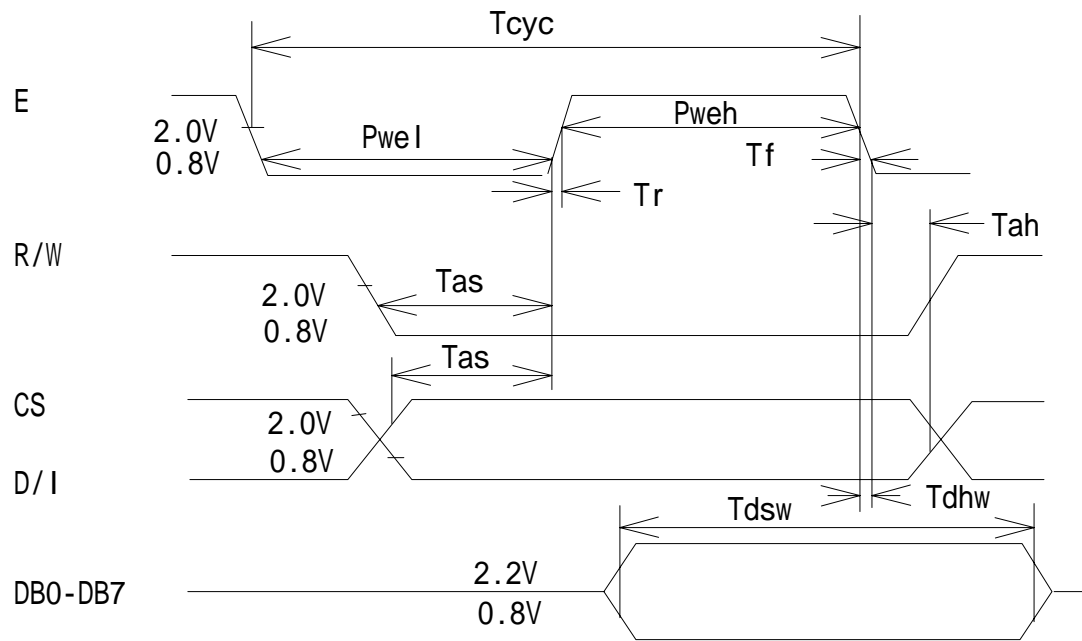
### 直流特性 DC Characteristics (Ta=25°C; Vdd=5.0V±10%)

PARAMETER	SYMBOL	CONDITION	MIN	TYP	MAX	UNIT
Operating Voltage(1)	VDD		4.5	5.0	5.5	V
Input Voltage	High	E,R/W,D/I,DB0~DB7 Terminals	2.0	--	VDD	V
	Low		0	--	0.8	
Output Voltage	High	DB0~DB7, Terminal	2.4	--	--	V
	Low		--	--	0.4	
Operating Current	Idd	During Display	--	--	2750	uA

### 交流特性 AC characteristics (Vdd=5V±10%, Vss=0V Ta=25°C)

Characteristic	Symbol	Min.	Max.	Unit
E Cycle	Tcyc	1000	--	ns
E High Level Width	Pweh	450	--	
E Low Level Width	Pwel	450	--	
E Rise Time	Tr	--	25	
E Fall Time	Tf	--	25	
Address Set-Up Time	Tas	140	--	
Address Hold Time	Tah	10	--	
Data Set-Up Time	Tdsw	200	--	
Data Delay Time	Tddr	--	320	
Data Hold Time(Write)	Tdhw	10	--	
Data Hold Time(Read)	Tdhr	20	--	

Writing timing



Reading Timing

